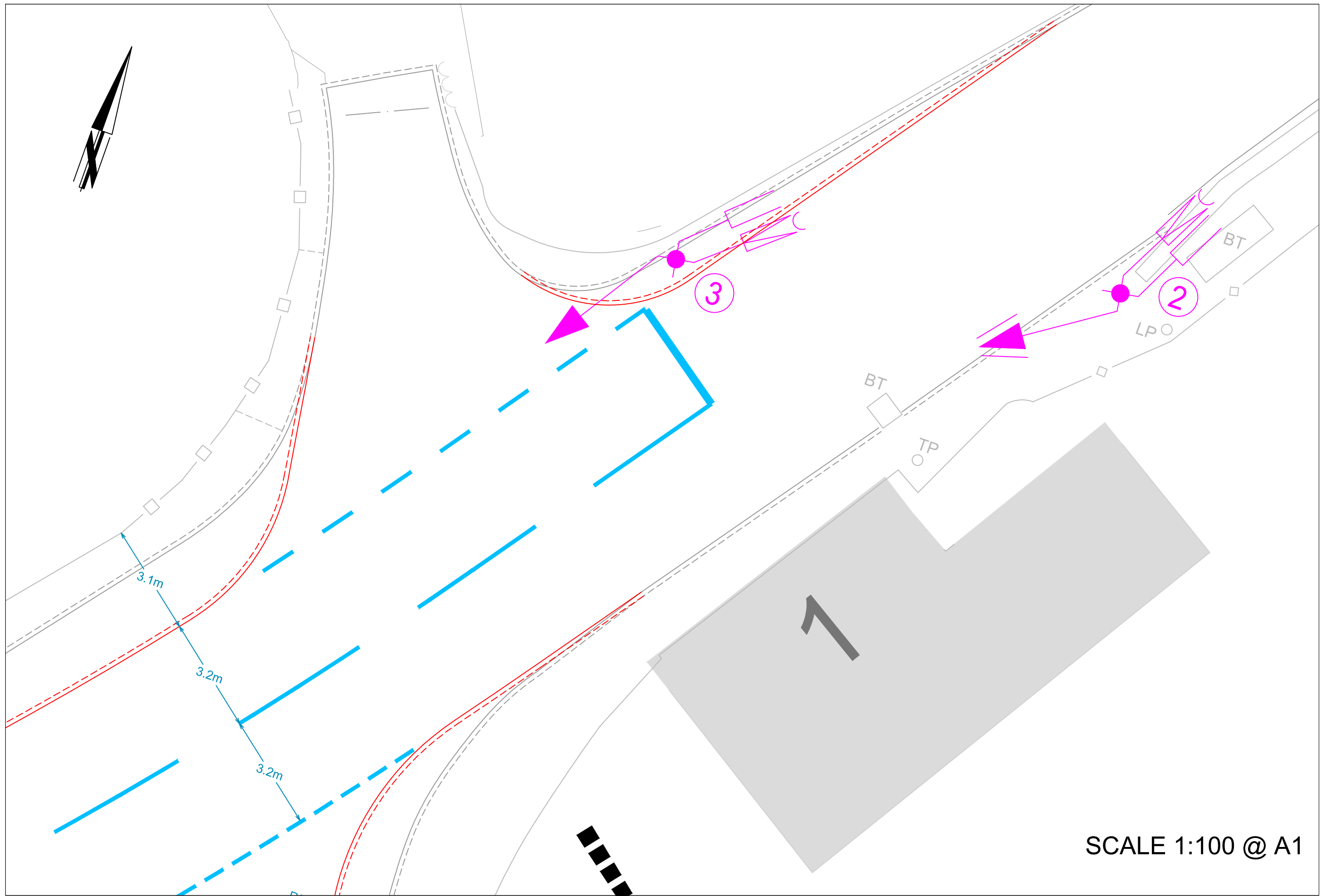


- KEY**
- Traffic Signal Stub Pole 2.1m Black, item number 4300/027
 - Traffic Signal Pole 3.8m Black, item number 4300/021
 - NAL Signal Pole Socket (600 mm overall height socket) as NCC standard detail NCD 500-17
 - ELV 3 Aspect Primary Traffic Signal, item number 4300/088
 - ELV 3 Aspect Secondary Traffic Signal, item number 4300/088
 - ELV 4 Aspect Primary Traffic Signal, item number 4300/089 Red/Amber/Green/Green left arrow
 - ELV 4 Aspect Secondary Traffic Signal, item number 4300/089 Red/Amber/Green/Green left arrow
 - ELV 4 Aspect Secondary Traffic Signal, item number 4300/089 Red/Amber/Green/Green left arrow
 - Low level Red/amber/green cycle signal
 - ELV LED PUFFIN nearside signal 4300/094 with separate ELV LED pedestrian demand unit 4300/093
 - Pedestrian tactile signal unit 4300/157
 - ELV Traffic signal controller 4300/081
 - ⑩ Traffic signal pole reference numbers
 - New Kerbs see NCC standard details NCD 1100-01, NCD 1100-08, NCD 1100-20, NCD 1100-21
 - New Pedestrian metal studs as standard detail NCD 1200-15
 - New Carriageway Markings, (Note the Lining Layout drawing must be referred to for full details)

REV.	DESCRIPTION	CHECKED	DATE

Traffic Signal Preliminary Layout 27/06/2016			
SURVEYED BY DESIGNED BY DRAWN BY CHECKED BY	INITIALS	DATE	DRAWING No. PE4118-TS-001
	DM/MC	06/16	PROJECT TITLE CCAG2 Eaton & Cringleford
	MC	06/16	SCALE 1:250 @ A1
			FILE No. PE4118-TS



KEY

Traffic Signal Pole 3.8m Black, item number 4300/021

NAL Signal Pole Socket (600 mm overall height socket) as NCC standard detail NCD 500-17

ELV 3 Aspect Primary Traffic Signal, item number 4300/088

ELV 3 Aspect Secondary Traffic Signal, item number 4300/088

Above ground thermal cycle detection

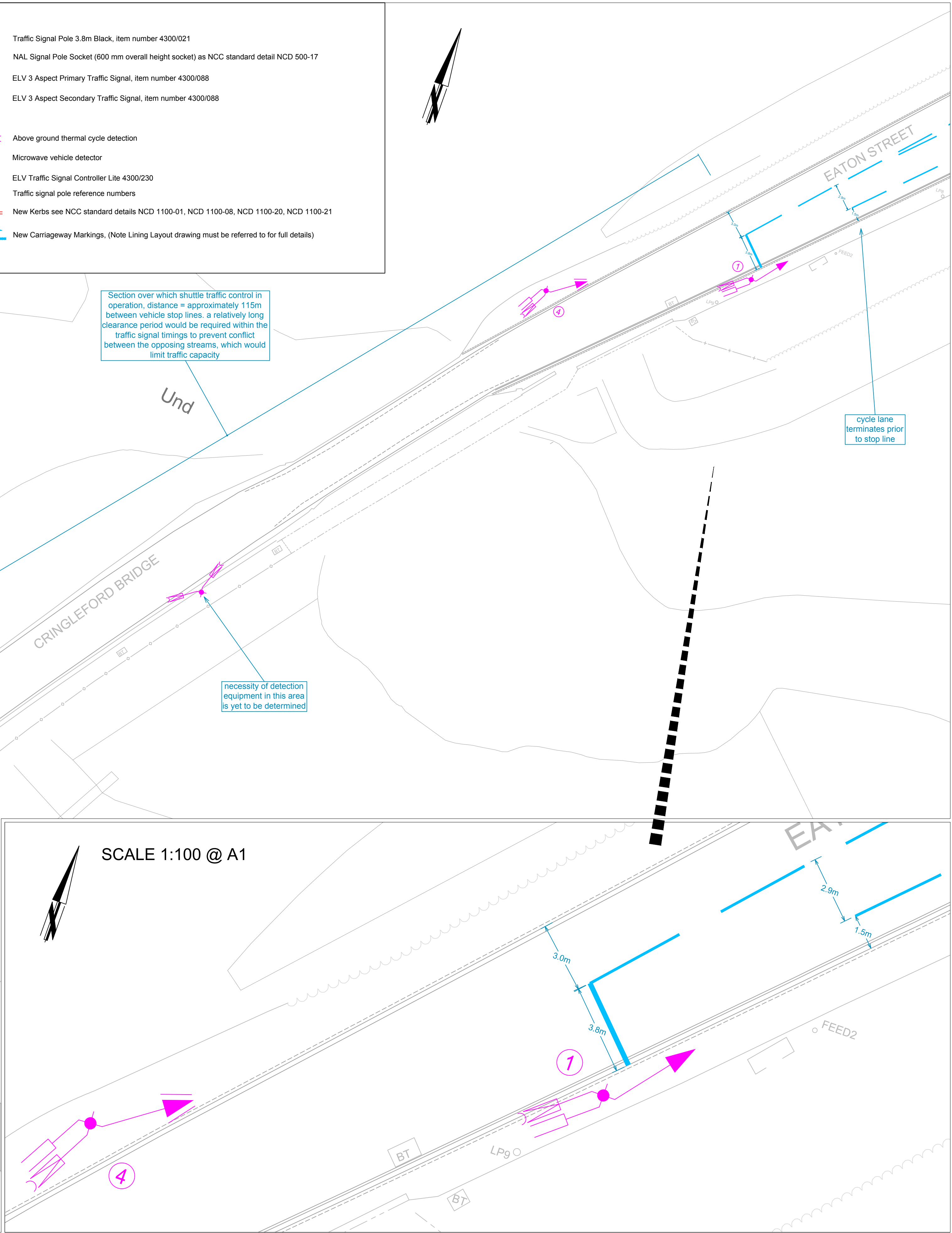
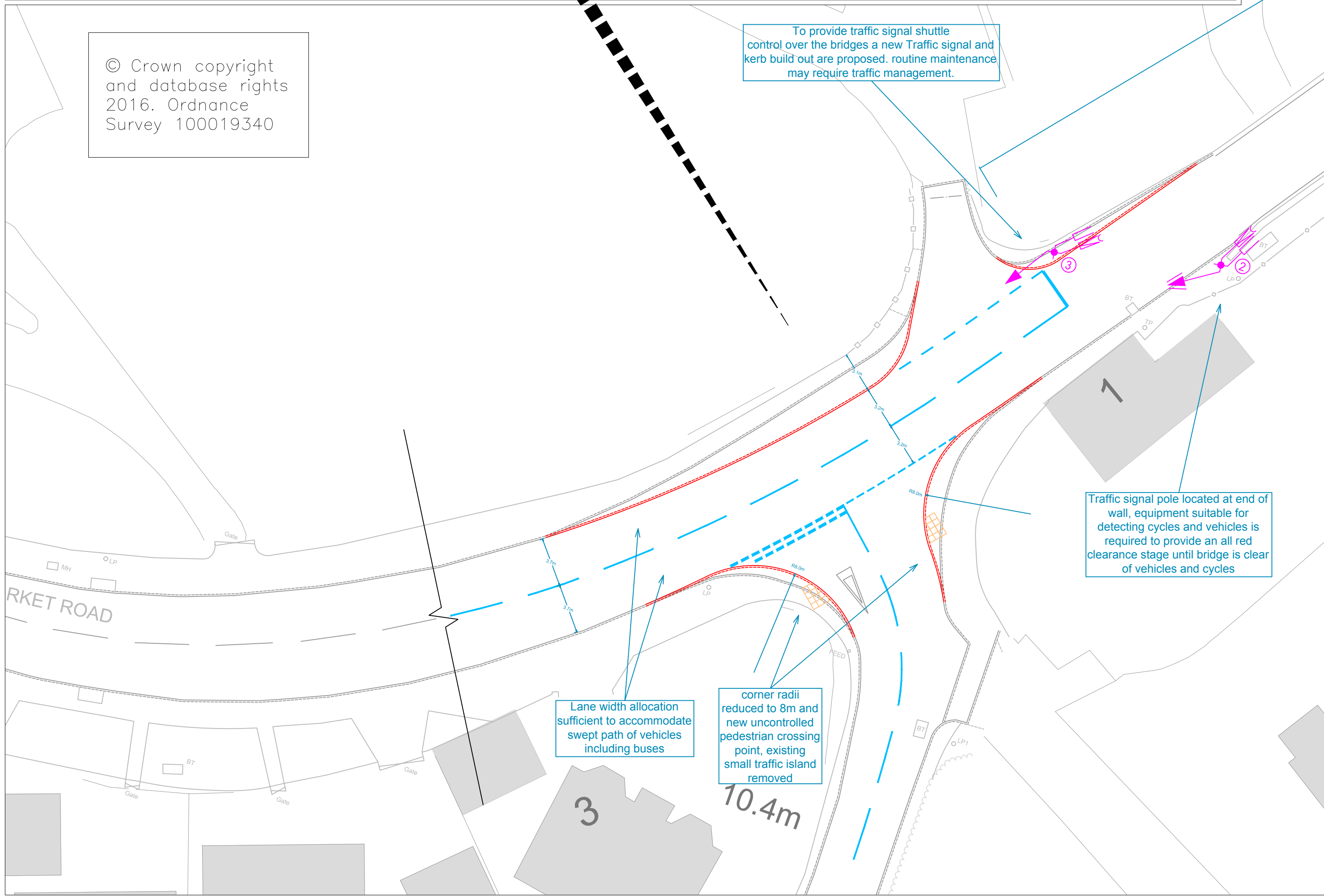
Microwave vehicle detector

ELV Traffic Signal Controller Lite 4300/230

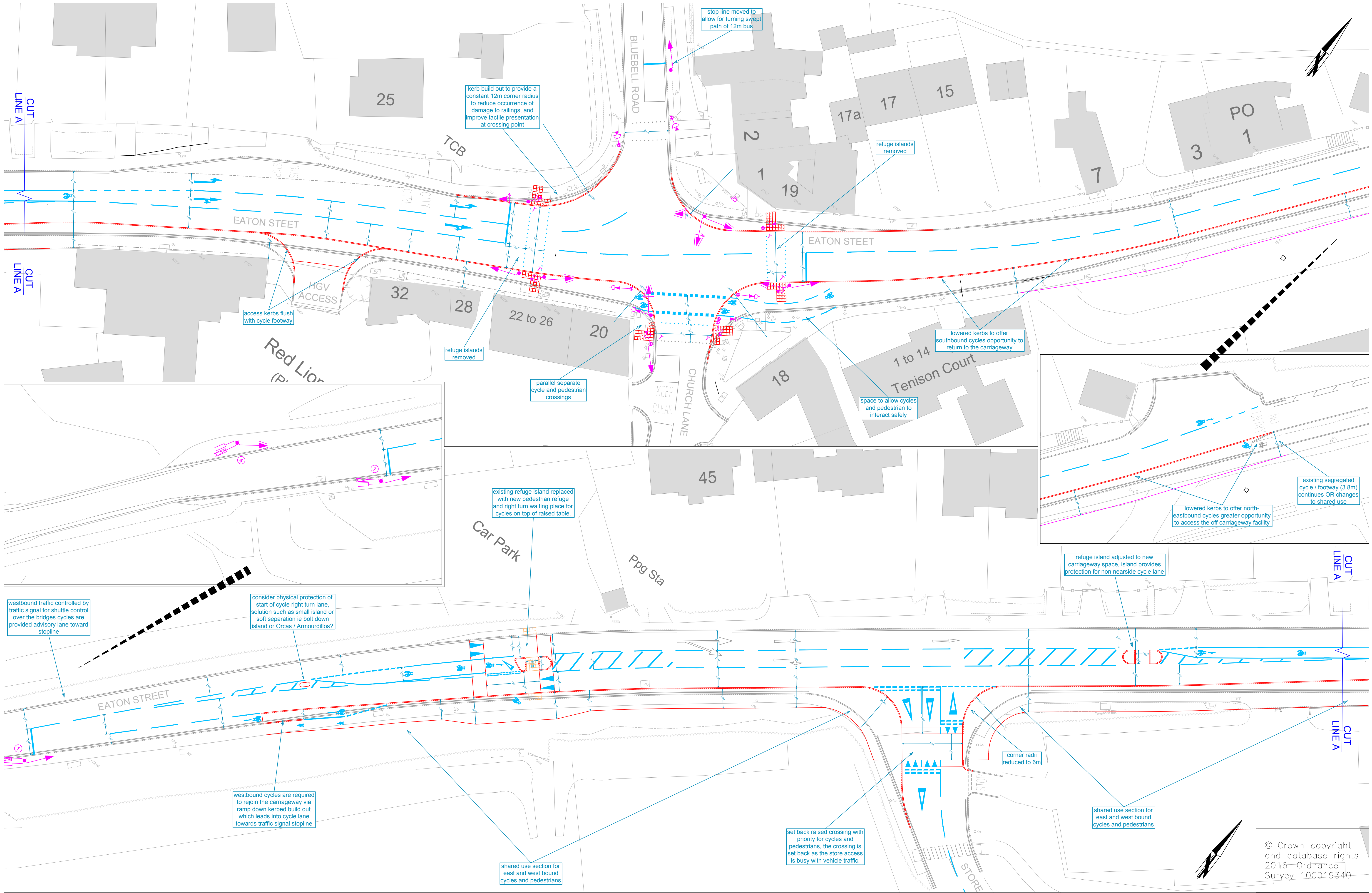
Traffic signal pole reference numbers

New Kerbs see NCC standard details NCD 1100-01, NCD 1100-08, NCD 1100-20, NCD 1100-21

New Carriageway Markings, (Note Lining Layout drawing must be referred to for full details)



REV.	DESCRIPTION	CHECKED	DATE



© Crown copyright and database rights 2016. Ordnance Survey 100019340

Traffic Signal Preliminary Layout 27/06/2016

 **Norfolk** County Council
at your service

Tom McCabe
Executive Director of
Community and Environmental Services
Norfolk County Council
County Hall, Martineau Lane
Norwich NR1 2SG

DRAWING TITLE
Traffic Signal Preliminary Design Layout
Eaton Street Cycle Facilities
South side off carriageway Cycle & Pedestrian path

REV.	DESCRIPTION	CHECKED	DATE

SURVEYED BY	INITIALS	DATE	DRAWING No.		
DESIGNED BY	DM/MC	06/16	PE4118-TS-003		
DRAWN BY	MC	06/16	PROJECT TITLE		
CHECKED BY			CCAG2 Eaton & Cringleford		
			SCALE	1:250 @ A1	FILE No.
					PE4118-TS